

The background of the entire page is black. Overlaid on this are several thin, light blue lines that form a complex, abstract geometric pattern. These lines intersect to create various triangular and polygonal shapes, some of which are filled with a very light blue color, while others are just outlines. The lines vary in length and orientation, creating a sense of depth and movement.

CIMSTONE®

made of quartz
made for life

FUTAR

Exclusive Distributor

F U T A R

is the exclusive distributor of

CIMSTONE[®]

in Singapore



Made of Quartz
Strong and durable



Elegant and
authentic



Splendid styles & designs



Eco-friendly



Easy to clean



Hygienic



Resistant to abrasion
and scratches



Food safe



Resistant to chemicals
like acids and alkalis





936 olympos

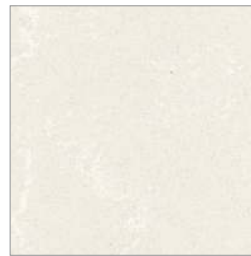
Colours



100 hierapolis



240 klaros



220 artemis



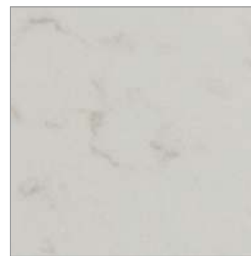
955 barents



480 arena



725 mora



925 nebula



990 sineda







Colours



935 versilia



560 alpino



614 mirat



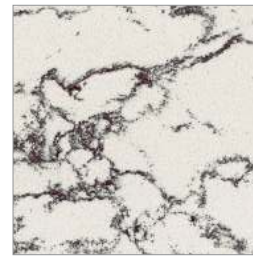
402 arcadia



900 lapland



936 olympos



995 nephila



614 mirat



Colours



175 keops



890 terra



170 etna



875 linen



815 smyrna



912 troas



345 lebedos



332 lapaz



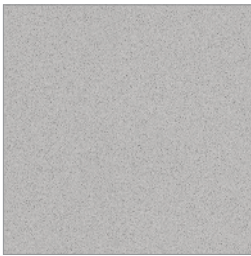


930 ares

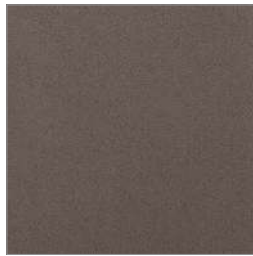


870 tundra

Colours



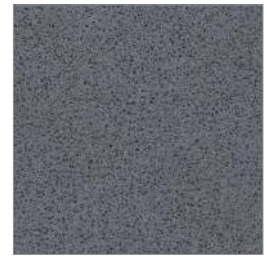
470 fuga



911 gharna



975 palmira



645 boreas



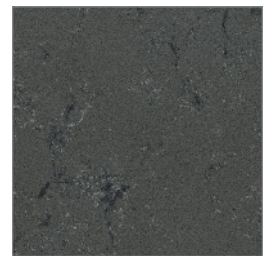
985 efes



997 carbone

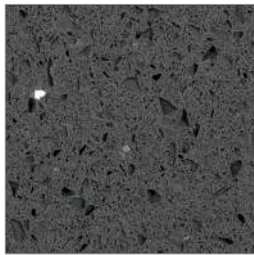


870 tundra



930 ares

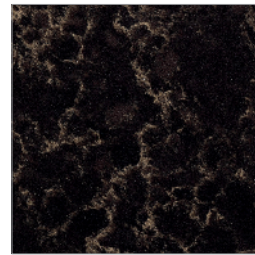
Colours



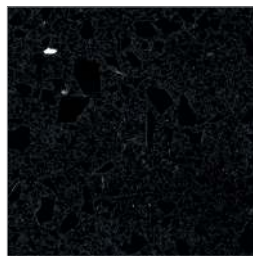
811 elvas



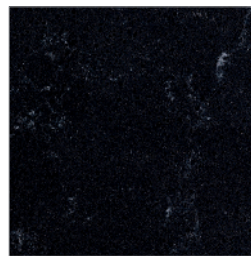
580 kromit



465 hermes



759 savana



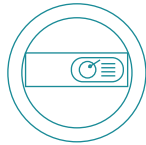
880 toros



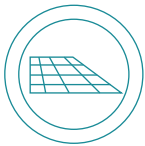
Area of Uses



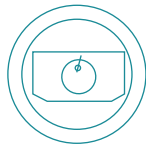
INDOOR WALL CLADDING



KITCHEN COUNTERTOPS



INDOOR FLOORING



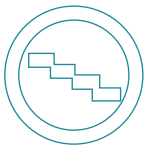
BATHROOM VANITY TOPS



TABLES/STANDS



RECEPTION DESKS



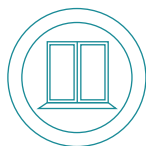
INDOOR STAIRCASES



LABORATORY COUNTERS



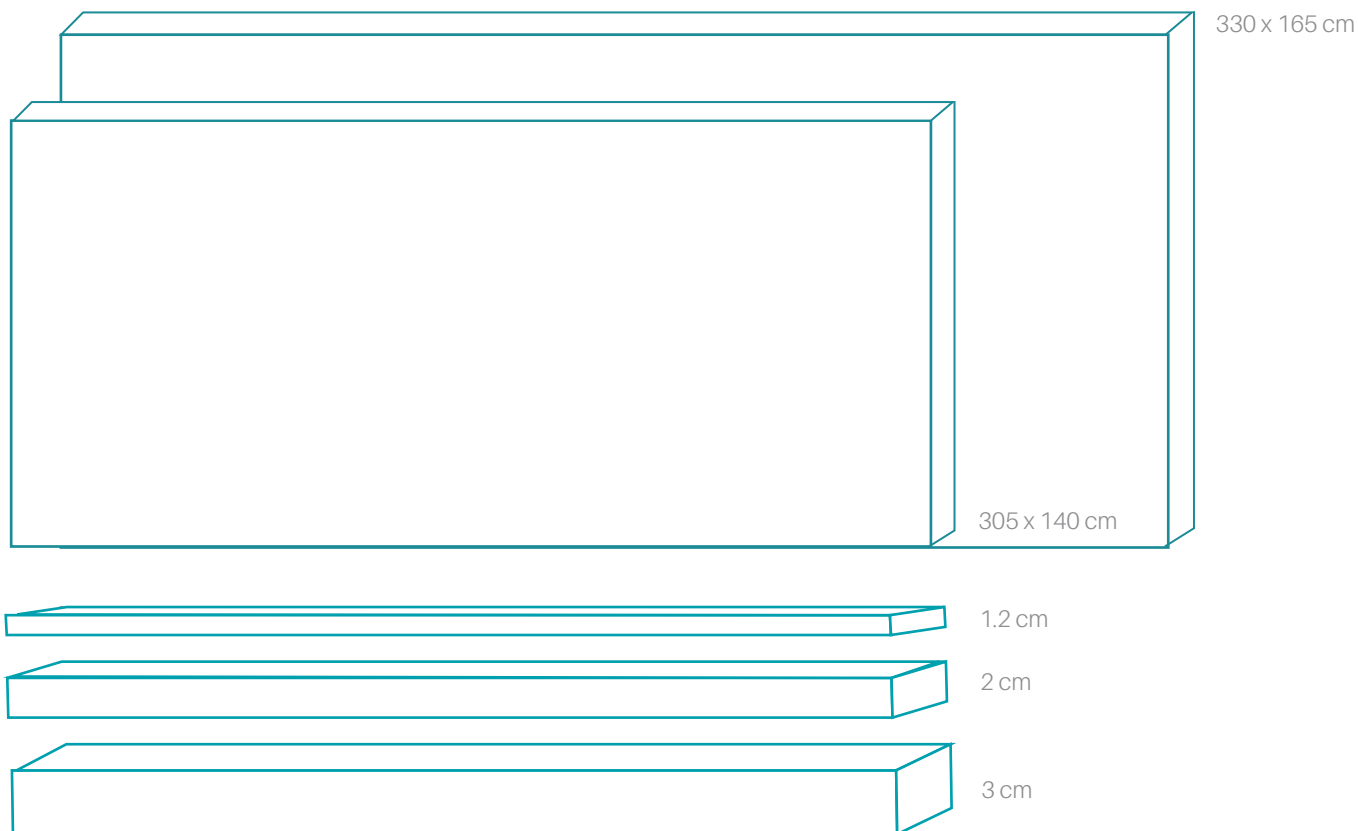
COFFEE TABLES



INDOOR WINDOW
SILLS



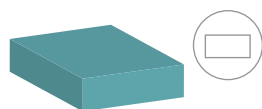
Slab Formats for Countertops



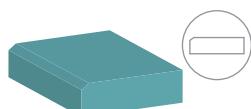
* all colours in our collection range are available in slab formats
slabs of 3 cm thickness can be indented upon early request

Edge Profiles

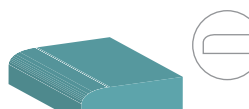
20mm
basic
profile edges



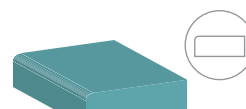
Straight Flat Polished



Chamfered

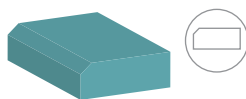


Half Bullnose

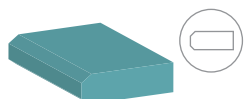


Round (5mm)

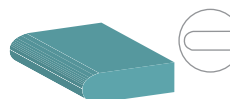
20mm
premium
profile edges



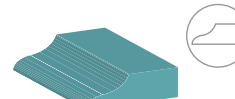
Bevelled (10mm)



Doubled Bevelled



Full Bullnose

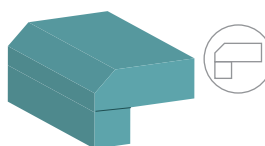


Ogee

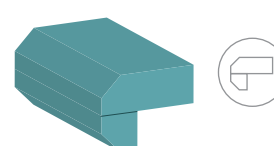
40mm
laminated
profile edges



40mm Flat Polished



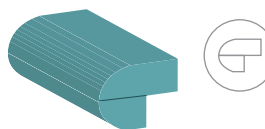
40mm Bevelled (10mm)



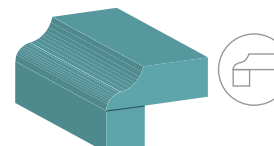
40mm Doubled Bevelled



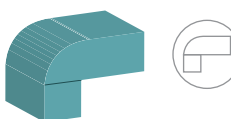
40mm Chamfered



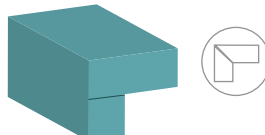
40mm Full Bullnose



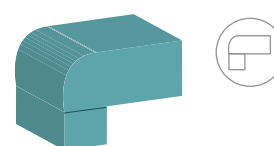
40mm Ogee



40mm Half Bullnose



40mm Mitered Edge



40mm Round (10mm)

Care and maintenance



By following these guidelines, you may enjoy the natural beauty and splendor of Çimstone for many years to come.



Like all fine materials, Çimstone responds best when handled with due care and attention. Remember, it is always easier to wipe up a spill than it is to handle a dried-on stain. Just wipe away any spilled food before it turns into a permanent stain.

Remember that detergents containing bleach and hard scouring granules may harm surfaces over time. Therefore, pay due attention in your detergent selection by never using cleaning products that contain soft or hard scouring granules such as Vim Scouring Powder or Cif Cream.



Products with pH close to neutral or with reduced pH effect (general cleaning products which may be commercially available on shelves) may be used at all times. However, prolonged contact with decalcifiers and products containing decalcifying agents as well as oil solvents and products containing oil solvents must be avoided.

Gently scrape away a plastic spatula any spills of paint, nail enamel, chewing gum, mustard and grease that become hard to remove when dried. Then cleanse the surface with water.



Quartz, being one of the hardest minerals on earth, offers Çimstone an unparalleled strength and durability that prevent easy scratching and damage. Still, as with any surface, Çimstone can be permanently damaged by exposure to strong forces that undermine its physical properties. In order for your countertop to maintain its good looks for many years, always use a bread/chopping board and a tablemat (trivet).

Daily Cleaning

Means for Cleaning:	A damp cotton cloth, ScotchBrite (3M) Soft Scour Sponge
Materials for Cleaning:	Pure water, liquid or spray detergents, non-abrasive liquid household cleanser
Method for Cleaning:	Clean the surface with a damp cloth and a little liquid/gel detergent, cleanse the surface off any detergent residues with water after treatment.

Examples of some proper cleaning agents for specific types of stains:

Removal of dried-on spills	Stubborn stains	Stains like rust or lime	Residues of grease
Cif Power Spray by Unilever	Concentrated Domestos Thick Bleach* by Unilever	Marc Deo Lime and Rust Removing Gel by Reckitt Benckiser	Ajax Spray & Wipe by Colgate Palmolive
Mr. Muscle Kitchen Spray by Johnson Wax	Mr. Proper Active Gel* by Procter & Gamble	Cillit Bang Anti-Kalk by Reckitt Benckiser	Mr. Muscle Kitchen Spray by Johnson Wax
Scrub with a blue Scotch-Brite (3M) Soft Scour Sponge and cleanse thoroughly with water.	Apply directly on the stain and then thoroughly rinse with water after treatment.	Apply directly on the stain and then thoroughly rinse with water after treatment.	Apply directly on the stain and then thoroughly rinse with water after treatment.

Caution:

- * Never leave your countertop to dry without thoroughly rinsing away any residual cleaning agent.
- * Due to the structural characteristic in its production, attention must be paid during the use of and cleaning with the products bearing the code 100 Hierapolis.
- * The above mentioned cleaning agents should not be mixed and applied on the surface.

Simple cleaning for a Sustainable hygiene...

Avoid using below list of chemicals on Çimstone :

- Alkali products containing active hidroxide (such as drain openers)
- Chlorinated solvents such as trichloroethylene or methylene chloride (like paint thinner or strippers)
- Prolonged contact with extremely strong concentrated chemicals must be avoided.

In case of any accidental exposure to any of these damaging products, wipe up material immediately and rinse the surface thoroughly with plenty of clean water. Repeat if necessary.

Every production reflects the characteristics of the quartz used. This may cause partial shade and texture alterations in the finished products.

Avoid Exposure to High Heat

Çimstone can tolerate brief exposures to moderately hot temperatures. Still, avoid placing any hot pot or oven tray direct from the heat source onto the countertop; definitely use a tablemat (trivet). When exposed to high temperatures, surfaces can react in various ways (cracking, discoloration, porosity etc.) depending on the product properties. Fabricated or cutout parts on slabs are much more frail, should therefore never be exposed to heat or open flame. When a heat source is situated close to a Çimstone backsplash/surface, take proper care for the reflected heat. It may accumulate resulting in very high temperatures causing damage to your countertop.





Çimstone is quartz based composite stone. Quartz is one of the hardest minerals found in nature. Comprised of quartz rating at 7 Mohs mineral hardness degree and processed via a cutting edge technology, Çimstone reflects its unparalleled advantages through its distinctive technical specifications. Therefore, it is important to comply with the recommended methods of fabrication unique to this product.

indicative technical specifications*

TEST	TEST METHOD	TEST RESULT
Impact Resistance	TS EN 14617-9	min. 2 Joule for 1,2 cm thickness min. 3 Joule for 2 cm thickness
Flexural Strength	TS EN 14617-2	40:70 N/mm ²
Abrasion Resistance	TS EN 14617-4	Max. 30 mm
Water Absorption	TS EN 14617-1	Max. %0,1
Reaction to Fire	TS EN 13501-1	A2 fl, S1

* Test results may vary according to product properties.



no more scratches, stains or abrasion

Being one of the hardest minerals found in nature, quartz endows Çimstone with unmatched strength and durability. With its nonporous structure, Çimstone provides a non-water absorbing consistency and is highly resistant to stains, scratches and abrasion.



resistant to acids and alkalis

Thanks to preeminence of quartz, Çimstone delivers great durability to acids and alkalis. It perfectly withstands exposure to household chemicals, tea, wine, vinegar, and lemon juice, strongly colored spices or other foodstuffs. It is also ideal product for use in laboratories.



easy to clean

Çimstone owes its inherent gloss to the natural sheen of quartz. It does not require any additional polishing or sealing. A simple clean will make the surface maintain its brand new look and clean appearance as on the first day for many years.



hygienic

Çimstone's compact structure suffers no liquid absorption and prevents microorganism and bacteria growth.



versatile

Çimstone is an ideal solution for any type of surface ranging from flooring to countertop. Thanks to its versatility and its aesthetic appearance with various color and texture alternatives, Çimstone creates cutting-edge designs and brings dreams to life.



creates splendid styles and designs

Commercial or residential spaces now shine with Çimstone reflecting the mastery of quartz. Vast color and texture alternatives, achieved through a variety of colored pigments and special effects including mirror, glass, basalt or seashell pieces create distinctive designs.



eco-friendly

With a conservation-minded approach in its product development and the advanced technology used in its production processes, Çimstone provides for a sustainable environment with fewer amounts of waste and high rates of water and energy savings.



food safe

Çimstone quartz is deemed to be food safe according to a SETSCO ISO 846:2019 antimicrobial test, where with standard test methods, it was confirmed of the absence of fungal and bacteria growth within the material.

Certificates



ISO 846 SETSCO - ISO 846: 2019

Çimstone fully passes the Antimicrobial Test based on ISO 846:2019 Fungal Growth Test (Method A) and Bacteria Test (Method C). No mold nor bacteria growth was observed and has been deemed a food safe material surface.



NSF

Çimstone fully meets NSF 51 Food Preparation Areas Compliance Criteria identified by NSF International, world's leading certification organization, Çimstone has been certified as the safest food preparation surface. Thanks to the NSF 51 certificate, Çimstone can be reliably used at homes and commercial kitchens.



EUROCERT

Çimstone is in compliance with regulatory requirements by the International Organization for Standardization. Çimstone production is in accordance with ISO 14001:2015 (Environmental Management), ISO 9001:2015 (Quality Management) and OHSAS 18001:2015 (Occupational Health and Safety Management) systems.



We stand behind our products 100%

Çimstone provides absolute customer satisfaction by backing its products with a 100% corporate assurance throughout sales and after sales processes.



EN

TSE Mark for Certificate of Conformity to Turkish Standards are monograms which indicate that the product bearing the mark is manufactured and placed on the market by complying with the relevant Turkish Standard(s). TSE Mark is the only mark approving the quality of the products on which it is to be used and it shall not be confused with the CE marking that is legally not a quality mark. CE marking merely states that the manufacturer has verified that the product complies with all relevant safety, health, environmental protection requirements. Customers should definitely look for TSE Mark especially on the imported goods.

FUTAR

NATURAL STONE • TILES • BATHROOM • QUARTZ

Head Office / Showroom:
19 Changi North Way, S(498786)

www.futar.com.sg
info@futar.com.sg
Tel: (+65) 6543 3818



@futar_sg



Products are depicted as closely as possible subjected to printing process limitations.
Futar reserves rights to modify any of our products' model, size, and characteristics without prior notice.

CIMSTONE®